



PASS Crane Navigator

PASS Crane Navigator

Part of our Crane OCR solution is the PASS Crane Navigator. This application provides a Graphical User Interface (GUI) to make sure operators can manage exceptions of multiple cranes from within a control room.

The software consolidates data from multiple OCR systems, providing the operators a user-friendly front-end application to handle exceptions remotely. From within a single application, users can efficiently validate high resolution images captured by the OCR system against data from the Terminal Operating System (TOS) .

The main functionalities

The following functionality is provided through PASS GUI Exception Software:



Consolidate and Interact

with the data from multiple OCR systems



Integrate with the TOS System

to accommodate remote exception handling from within a single application



Provide an archive

of OCR events and related Damage images to allow the user to:

- Search on historical data by container ID, event ID, Crane ID and/or date and time range
- Review details of OCR event (OCR images and data, confidence level, images)
- Export OCR data
- Refute damage claims



Enables Clean Up Mechanisms

through administrator settings. The period of storage and back-up of images & events is the responsibility of the end user.

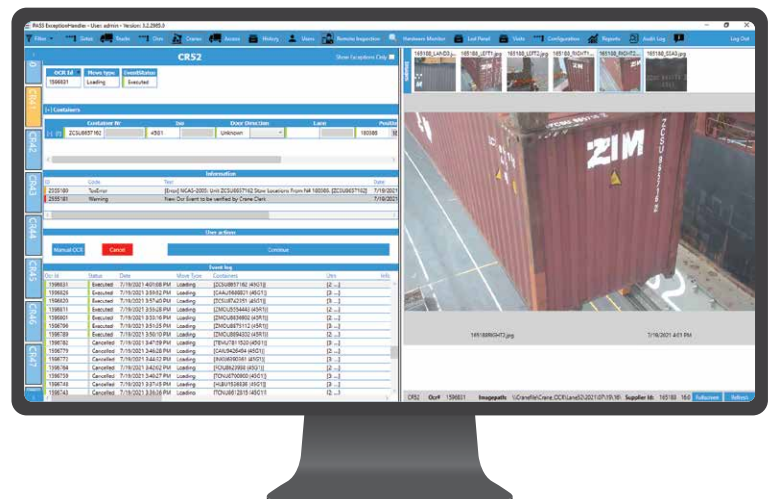
What does the system support?

OVERVIEW

The PASS Crane main screen provides an overview of all cranes, displaying status information of the actual events and older non-completed exceptions. The end user can filter on single or multiple cranes showing all transactions or only those with errors.

DETAILED INFORMATION

When selecting a crane, the screen provides detailed information of a specific event. This allows a user to edit information (depending on what is agreed and available as OCR data), allows to cancel or continue processing and also shows a list of recent messages.



CLEAR IMAGES

The image ribbon can be enlarged to review each of the available images in a bigger window. Zooming is possible using the scroll wheel of the mouse. This makes it easy for the operator to validate the data.

AVAILABLE CONNECTIONS

The PASS Hardware Monitor displays and alerts on the live health status of each camera.

REMOTE LOOK-UP

The PASS Web Client enables remote look-up of OCR events. The user can search by container number, event ID and filter on move type, listing all events for a certain date range. The PASS Web Client shows the event details, including images after searching. Users can see the clear condition (damage or not) of containers at the time of operations

DIRECT AND CLEAR INSIGHT INTO ALL EXCEPTIONS

Our Customers

CERTUS customers include many of the major terminal operators, logistic- and distribution center operators, depots, intermodal terminals and port authorities. Some key figures on our installed base: over 50 customers worldwide, over 40 ports and 20 logistic facilities worldwide, in over 29 countries.



About CERTUS

CERTUS Automation is a world leader in the fields of OCR and machine vision software for port- & logistics process automation. Our global headquarters including back office, workshops, warehousing and logistics center is located near the Port of Rotterdam in the Netherlands. The Company benefits from the contribution of over 70 employees globally, most of which serve in the development, manufacturing and integration areas.

CERTUS is an internationally operating company, executing projects around the globe. The network of CERTUS offices, local representative partners and a 24/7/365 Support Desk with experienced hardware and software engineers are there to support after go-live. At CERTUS we strongly believe that our industry quality standards make a significant difference. CERTUS is ISO 9001 certified. Our knowledge and experience make us a reliable partner for all automation projects.

BECAUSE CERTAINTY IS MISSION CRITICAL

CERTUS
AUTOMATION

CERTUS Port Automation B.V.
Rietlanden 3
3361 AN SLIEDRECHT
The Netherlands

+31 (0)85 00 688 00

sales@certusautomation.com

www.certusautomation.com